

Alabama State University

Counseling Education

Department

VIRTUAL

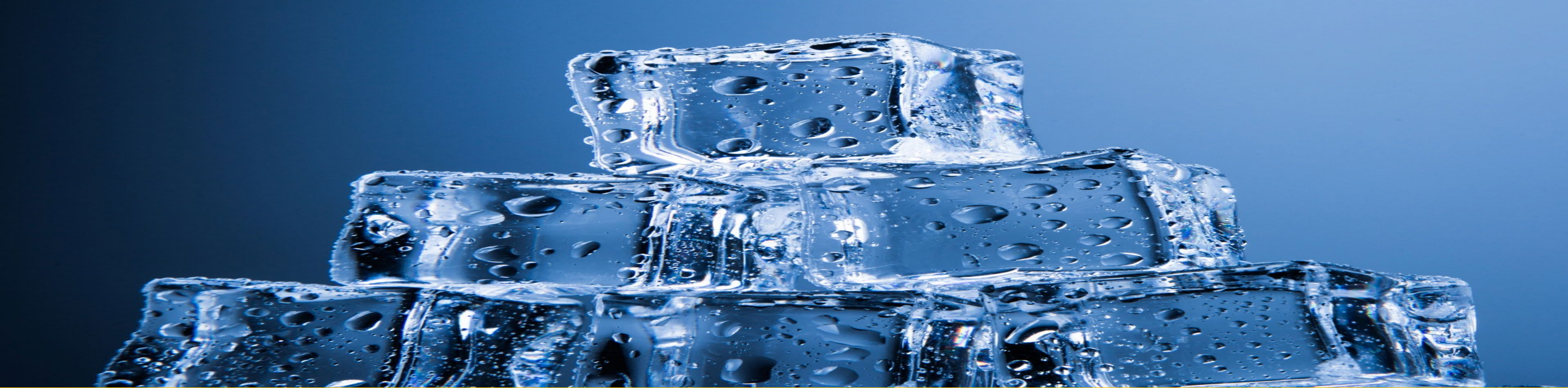
MEET & GREET



Monday, September 13, 2021

5:30 p.m. - 6:45 p.m.

Moderator: Kristi James



ICE

- BREAKER



The background of the slide is a vibrant orange with a radial sunburst pattern emanating from the center. Scattered around the central text are several stylized illustrations of hands holding various mobile devices (smartphones and tablets). Each device screen displays the Kahoot! app's main interface, which consists of a 2x2 grid of colored buttons: red with a white triangle, blue with a white star, green with a white square, and yellow with a white circle. The word "Kahoot!" is written in a large, bold, purple, rounded font with a slight shadow effect.

Kahoot!

WWW.KAHOOT.IT

PIN NUMBER IS IN THE
COMMENT BOX

Alabama State University

FACULTY INTRODUCTIONS

Full name and one (1) unique thing about yourself.



Dr. Linda Holloway



Dr. Jeane Lee



Dr. Juanita Barnett



Dr. Lawanda Edwards



Alabama State University STUDENT INTRODUCTIONS



Tell us your full name.

Tell one (1) unique thing about yourself.

Program of choice & your aspirations once you complete this program.



GAME TIME



KAHOOT

www.kahoot.it

PIN NUMBER

IN

COMMENT BOX

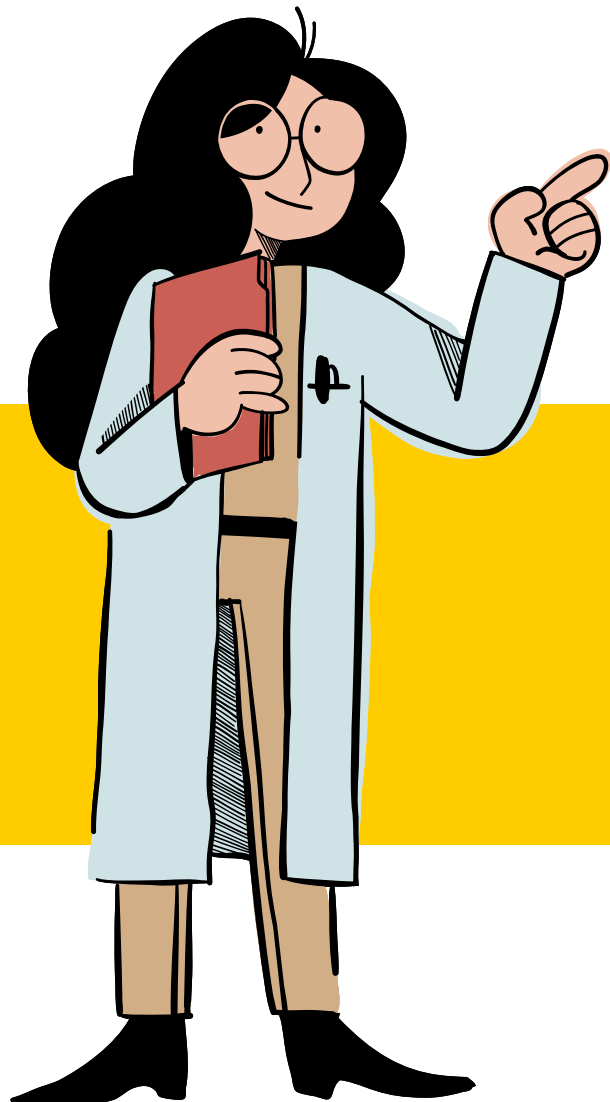
PROGRAM ORGANIZATIONS

Dr. Juanita Barnett



Chi Sigma Iota Honor Society

Counselor Education Student Association (CESA)



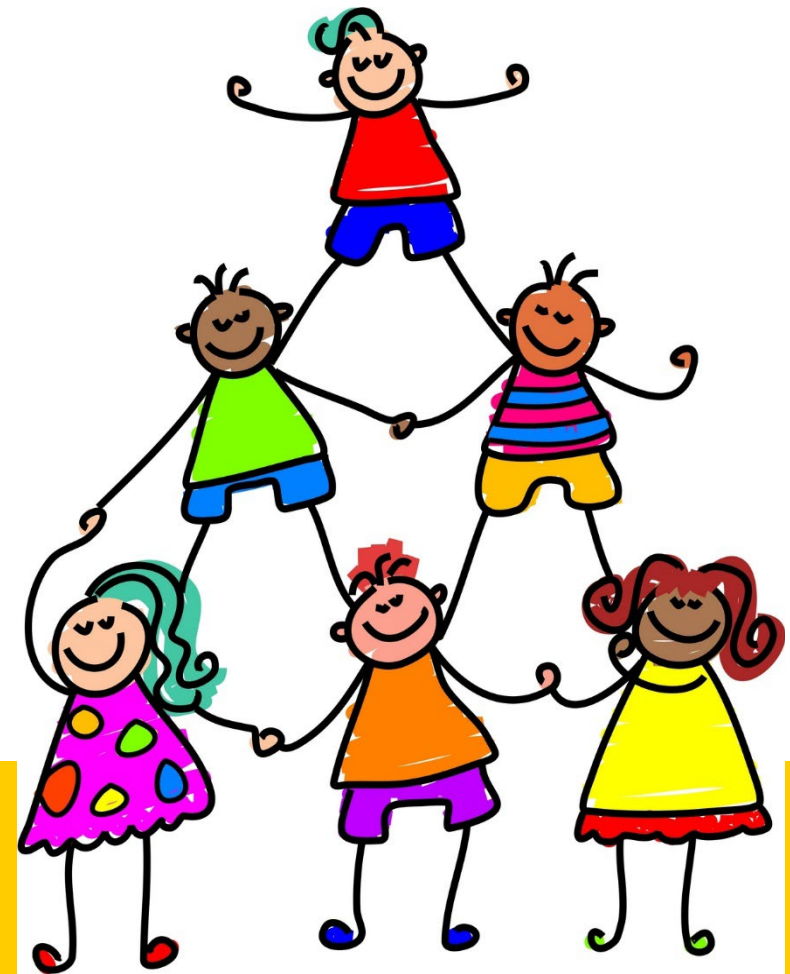
ASU

ALABAMA STATE
UNIVERSITY

SCHOOL COUNSELING

Ms. LaTorya Hawthorne

- School Counseling
- Journey through grad school
- Current position
- Advice for graduate students





ALABAMA STATE
UNIVERSITY

CLINICAL MENTAL HEALTH COUNSELING

Mrs. Loretta Hatchett

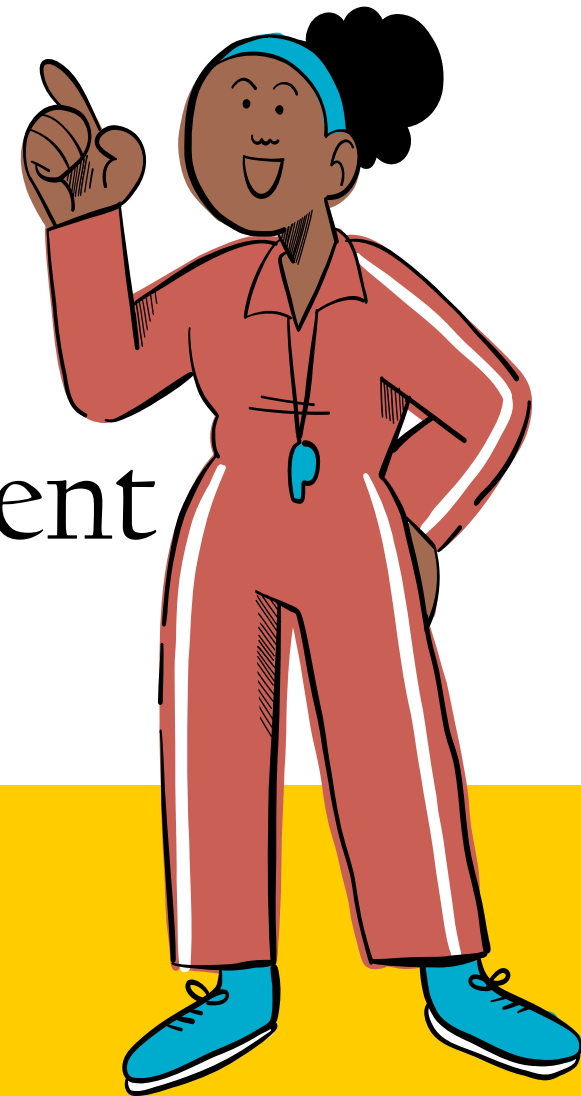
- Clinical Mental Health
- Interest & Careers with Clinical Mental Health
- Advice to new and current graduate students



HOW TO SURVIVE GRADUATE SCHOOL

SPECIAL GUEST: MS. ASHLEY COOKS

- Graduate Experience
- Counselor Education Student Association (CESA)
- Conference Presenter
- Becoming an ALC
- Advice to current graduate student



WORDS OF ENCOURAGEMENT

Mrs. Audrey Parks & Ms. Kristi James

DON'T QUIT

When Things go wrong, as they sometimes will,
When the road you're trudging seems all uphill,
When the funds are low and debts are high,
And you want to Smile but have to sigh.
When care is pressing you down a bit,
Rest, if you must, but don't you quit.

Life is queer with its twists and turns,
As everyone of us sometimes learns,
And many a failure turns about,
When he might have won if he'd stuck it out,
Don't give up though the pace seems slow,
You might succeed with another blow.

Often the struggler has given up,
When he might captured the victor's cup.
And he learned too late, when the night slipped down,
How close he was to the golden crown,

Success is failure turned inside out,
The silver tint of clouds of doubt,
And you never can tell how close you are,
It may be near when it seems afar,
So stick to the fight when you're hardest hit,
It's when things seem worst that you mustn't quit.

Edgar Albert Guest





QUESTIONS & ANSWERS

ASU

ASU

ASU

ALABAMA STATE UNIVERSITY ALABAMA STATE UNIVERSITY ALABAMA STATE UNIVERSITY